

# Lesson 13 (im-)

a b c d e f g h **i** j k l **m**  
n o p q r s t u v w x y z

**i m**

A. Listen to someone say the following words. Then try to read the words.

image

imaginary

image

imitate

immature

immerge

immune

impact

imp perfect

imply

impossible

imp proper

B. Circle the letters that match **im**.

im: en in me em im ih ev im  
mi im in en im im it im

C. Write **im** on the lines below.

im

\_\_\_\_\_

\_\_\_\_\_

\_\_\_\_\_

D. Circle **im** in the words below.

imagine

imitate

imperfect

impulse

impractical

impel

impurity

impart

important

impress

impossible

image

E. Write **im** in the words below. Read the words that you make.

\_\_\_\_\_mediate

\_\_\_\_\_migrate

\_\_\_\_\_pair

\_\_\_\_\_perfect

\_\_\_\_\_partial

\_\_\_\_\_part

\_\_\_\_\_personal

\_\_\_\_\_balance

\_\_\_\_\_pact

F. Draw lines to matching words.

implicit

immigrate

immigrate

imperial

imitation

implicit

immense

imitation

imperial

impart

impart

immense

G. Say a sentence using each of the following words.

imaginary impossible important imply

impractical improper imitation impact

H. Fill in the blanks with the following words.

imitates

impossible

impressed

important

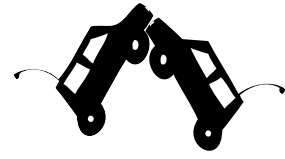
immediately

impure

1. My dad wants it done \_\_\_\_\_!
2. It is \_\_\_\_\_ to do it right now.
3. I am \_\_\_\_\_ with her piano playing.
4. The little boy \_\_\_\_\_ his father.
5. It is \_\_\_\_\_ to travel to the sun.
6. The water is too \_\_\_\_\_ to drink.

I. Match the words with the pictures.

imaginary



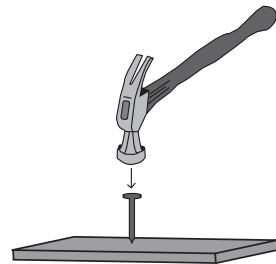
imperial



impact



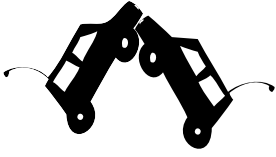
image



improve



J. Write the word next to the picture.



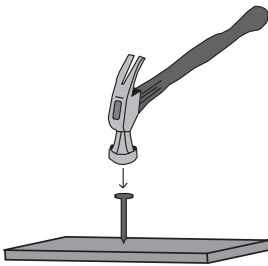
---



---



---



---



---

K. Draw pictures to represent the following words.

important

immense

imaginary

immovable

L. Practice writing each of the spelling words 2 times.

1. imagine

---

---

2. imitate

---

---

3. immediate

---

---

4. immigrate

---

---

5. immovable

---

---

6. impact

---

---

7. imperfect

---

---

8. important

---

---

9. impossible

---

---

10. improve

---

---



M. Practice writing the following sentences as neatly as you can.

It is important that we do not become impatient.

---

---

She immediately improved the imperfections.

---

---

N. Write down 3 or more sentences using th words from this lesson.

---

---

---

---

---

---

---

---

O. Spelling Words.

1. \_\_\_\_\_

2. \_\_\_\_\_

3. \_\_\_\_\_

4. \_\_\_\_\_

5. \_\_\_\_\_

6. \_\_\_\_\_

7. \_\_\_\_\_

8. \_\_\_\_\_

9. \_\_\_\_\_

10. \_\_\_\_\_